

PAPERHOST.COM

Remote Access Application Programmer Interface

The following few paragraphs outline the API for PAPERHOST.COM. The use of this API is simple and can be referenced from any browser application. There are three parameters that the PAPERHOST system will accept; two of which are required. The parameters are as follows:

- **CRITERIA** (required) Specifies which fields to search by in the PAPERHOST system.
- **CLIENTID** (required) Internal PAPERHOST client id (provided by PAPERHOST)

The **CRITERIA** and **CLIENTID** values are provided to the programmer by PAPERHOST.COM. Incorrect use of these parameters will lead to search failure. Furthermore, all searches will start with

“<https://www.paperhost.com/Ph/ph/resultsframe?>”.

The **CRITERIA** option is one of the two required parameters. Its setup is essential for proper searches in the PAPERHOST system. It follows this structure (*phfieldNo*, *Value*, *phoperator*, *phorder*). *Note: The parentheses are required as criteria separators.* Let's examine these in greater detail.

- *PhfieldNo* is an internal field number to the PAPERHOST system. Each client will have field number(s) that represent different fields in the database. PAPERHOST's technical staff will have to provide you a list of fields with matching numbers and types.
- *Value* is the data you are searching for.
- *Phoperator* is the operator that will be used during the search. PAPERHOST has two different sets of operators. These are dependant upon the field's type that you are searching by. If the field is a string then it will use one of the following values:
 - EQUALS 1
 - BEGINS WITH 2
 - CONTAINS 3

If the field is of type numeric or date, the following operators may be used:

- EQUALS 1
- RANGE 2
- NOT EQUAL 3
- LESS THAN EQUAL 4
- LESS THAN 5
- GREATER THAN 6
- GREATER THAN EQUAL 7

- Phorderby is used to sort the results by this field. It has two possible value:
 - TRUE
 - FALSE

The following is an example of a search using the CRITERIA parameter:

["https://www.paperhost.com/Ph/ph/resultsframe?Criteria=\(20,300001,1,false\)&Clientid=6"](https://www.paperhost.com/Ph/ph/resultsframe?Criteria=(20,300001,1,false)&Clientid=6)

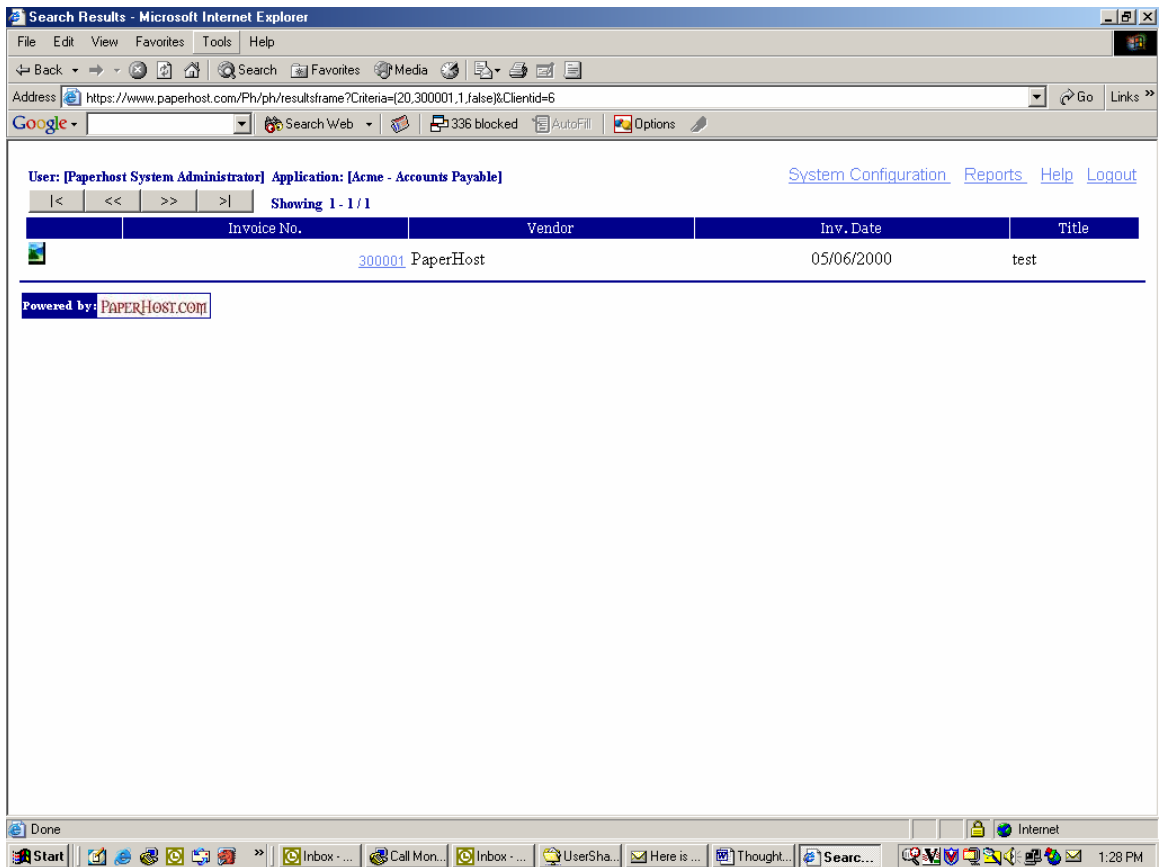
You will notice that we are using a compound search for this example. Lets examine the first part of the criteria. "20" represents the internal PAPERHOST field identifier. "300001" represents the value to search for. "1" is the operator to use in the search. "false" is for sort order of the results set. The CLIENTID is a required field. It's value represents the unique PAPERHOST identifier assigned to all PAPERHOST clients. In this case, we are searching for client id 10.

PAPERHOST.COM provides a secure environment for document storage on the web. It is for this reason that users using the system **MUST** enter a valid account name and password. Since you are using the URL method to access the system, you will be prompted for your PAPERHOST user name and password. The following screen will appear the first time you access the system:



This login dialog will appear when you first access the system. It will not reappear until the current session ends when the cookie expires. Currently, the cookie expiration is set for set for 24 hours.

After the user has cleared PAPERHOST security, the next screen that they will see is the search results. This example however, shows the above search with the search criteria portions included



The user can then select and display any images found in the search results list. Furthermore, the user has the option to run additional search using the PAPERHOST search screen.